

LAKE HUGH MUNTZ NEWSLETTER

Prickly Water Nymph



Swimmers have been encountering this weed. The sharp spikes can be potentially annoying to waders as small shoots break off from the main plant and float on the water surface. This plant is harmless and benefits water quality like other water plants. Council will not be controlling it unless it forms beds large enough to warrant harvesting.

LHM Notice Board



The Care Group has asked Council to update the notice board more regularly including council articles. We have limited space for our articles and all articles have to be approved by Catchment Management and Parks. This makes it difficult to provide regular updates. We are working with council to keep articles up to date and more interesting for the many residents passing by.



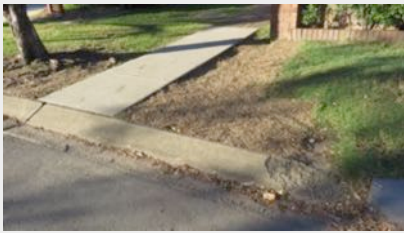
Council Reports -Water Quality

Water quality results from 2014 show record levels of nutrients, including Phosphorus and Nitrogen, particularly in the middle of the year. Recent increases coincided with sand replenishment works that started in the middle of 2014. Residents voiced concern over the cleanliness of the sand used in the works. The disturbance of bottom sediments as well as the collapse of a retaining wall with subsequent testing of foreshore stability all added to nutrients in the lake.

Fortunately nutrient levels decreased toward the end of 2014, but still remain well above the Water Quality Objectives for a healthy lake. Results were disappointing as residents were looking forward to improvements in water quality as a result of the installation of litter baskets in all drains in March 2014. Water quality is trending in the right direction and every care will help improve Lake Hugh Muntz in 2015. (Detailed results on page 4)



Maintenance Requests Do Work – Pathway Repaired



Local residents raised a request to rectify a path in Haslewood Court. The path was poorly sloped making it difficult for the elderly, biker riders and prams to negotiate. This resulted in many users “cutting the corner” eroding the surrounding area and increasing soil runoff into the lake. GCCC responded to the request with an improved design.



If you see any issues that require maintenance including branches, rubbish in parks etc, you can raise a request by contacting council on:
 1300 465 326
 or email - mail@goldcoast.qld.gov.au

Clean-up Day Info



With an amazing amount of rubbish removed each year, another cleanup day is planned for October with a BBQ afterwards. Keep a look out for the flyer in your mailbox and please get involved!

Singapore Daisy Threatens Lake

Several houses have outbreaks of Singapore Daisy that owners will not bring under control. This has caused outbreaks in reed areas as shoots are distributed around the lake. Singapore Daisy is difficult to control and requires ongoing treatment until no regrowth occurs. A little extra work by home owners can save a lot more work by preventing further outbreaks. Council has been asked to communicate with owners under its delegations to monitor and control noxious weeds. Owners can help!



Is This Water From Your Property?

A photo taken in catchment area shows brown water from soil erosion flowing into the drain. The dirty water came from a nearby property. This discoloured water not only turns the lake brown but add nutrients that are already at high levels.



You can help by ensuring;

- **All garden beds are mulched.**
- **Grassed areas including the nature strip are in good condition.**
- **Check your property water outlet in heavy rain.**

When is it safe to swim in the lake?



Historical monitoring suggests that water quality is generally of a high standard, suitable for primary contact and recreational activities.

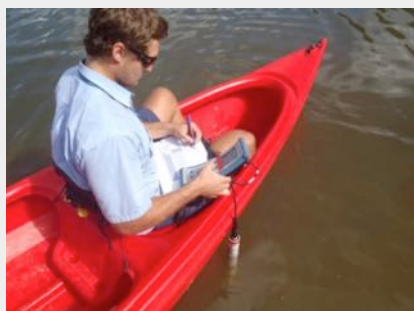
City of Gold Coast tests water for E.coli weekly in summer. Results take 48 hrs. The lake is closed for continued high results. Last occurrence 2011!

Rainfall events affect the health of waterways. Rainfall collects pollutants from land before it is flushed into creeks, rivers and oceans via the storm water system. Stormwater runoff can increase bacterial levels in water and occasionally make them unsafe for swimming.

Therefore, during and after heavy rainfall, swimming should be avoided for:

1 day at open beaches, and 3 days in rivers, estuarine and lake locations.

City of Gold Coast City monitors 26 recreational water locations such as Lake Hugh Muntz. These areas include a combination of open beaches, creeks, estuaries, enclosed lakes and swimming enclosures.



Feeding Swans

Bread to a swan is like lollies to a kid

By Rowley Goonan

Wild Bird Rescues / 0438-823100 - 24/7

Enjoying the swans on our lakes and waterways is one of the great pleasures of living on the Gold Coast.

I'm often asked '*what's the best food for swans?*' It definitely isn't bread.



Bread is not good for any species of bird. Their digestive system is not designed to metabolize refined flour, preservatives, yeast or refined sugar.

Bread to a swan is like lollies to a kid. They'll gollop it down. But bread displaces the natural food they should be eating. If they eat too much bread, for too long, they become weak and breed unhealthy young. Bread is very high in protein compared to a swan's natural diet of water weeds. If young cygnets (baby swans) eat a lot of bread (or grains/flour) they can experience a growth spurt that causes their body to develop too quickly for their legs. They can become plump to a point where they can't stand or walk. Some develop a condition called 'angel wing' where the feathers on one, or on both wings, grow out sideways. Birds with angel wing will never fly.

You'll notice that in the wild swans dip their head underwater to forage for the stems and roots of water weeds. These 'green foods' form their natural diet. This is supplemented with a few bugs and insects. I know that bread is very convenient and clearly swans love it, but to be healthy they have to eat a natural diet, or foods that are close to their natural diet.

By making an effort to feed swans a 'close to natural diet' you help ensure they grow into beautiful, healthy birds. For pictures and information about swans and my bird rescue service, go to ... www.wildbirdrescues.com.au

Sludge and Pollution Gather on Water Surface

Residents have noticed that during Autumn and Winter sludge has been gathering on the western side of the lake (red areas on map).



This is concentrated by light overnight offshore winds that gather the sludge in coves and particularly in front of the swimming area in Bel-air Park. Keen swimmers waded through this to access the lake and have raised concern over infection.

The Care Group has asked Council for an investigation into where the pollution comes from and to seek methods to prevent or remove it. Type in this Google address to view video footage of the sludge:

<https://goo.gl/3DmOoP>



2014 Water Quality Graphs

Courtesy - City of Gold Coast Council.

Graphs below show detailed results from site 2 (eastern lake) and site 3 (western lake) with the Water Quality Objectives.

